



Enlightened

LIGHTING | AUDIO | STAGING | VIDEO

Venue Services

- Installation • Servicing • Maintenance • Repairs • Testing
- Annual Inspection • Safety Certification • Training

Maintain your best performance
Theatrical technical support without the drama

Who we are

Established in 1999, Enlightened are experienced industry professionals who specialise in providing production services, installation, maintenance, hire and sale of performance equipment.

We offer complete support for venues no matter their size or arts discipline.

We have extensive experience and expertise in maintaining, testing and installing technical equipment across a wide range of venues including; large multi venue theatres, small arts spaces, schools, colleges, exhibition halls and houses of worship.

Our qualified, skilled and dedicated staff can provide experienced support, service and training in lighting, audio, video, staging, rigging and all things technical in a theatre environment.

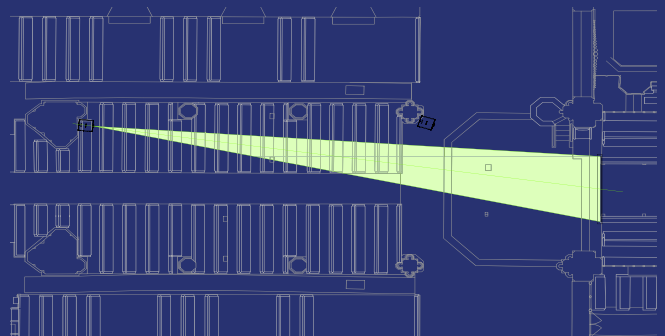


Our experience & expertise

As one of the leading performance equipment providers of: Hire, Installation and Production services in the South West we have extensive experience in servicing venues, events and productions of every kind. We know what it takes to keep your equipment in the very best shape however hard it works. We have repaired, installed and used equipment in a huge variety of venues and across performances as spectacular and diverse as you can imagine. We maintain, inspect and install equipment all day every day so we know your kit inside and out.

We regularly work in:

- School Theatres & Halls
- Houses of Worship
- Professional Theatre & Arts Centres
- Broadcast & Television Studios
- Museums & Galleries
- Conference Facilities
- Licensed Venues & Halls



info@enlx.co.uk



01179 727123



www.enlx.co.uk



Enlightened

LIGHTING | AUDIO | STAGING | VIDEO

Technical support provided

Fully accredited annual inspection, testing and safety certification.

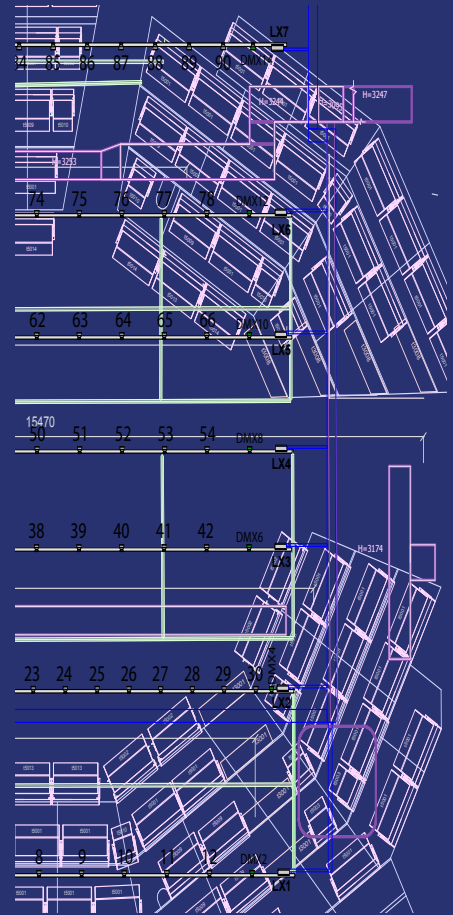
- Portable Appliance Testing (PAT)
- Electrical system testing
- Lifting & Access Equipment testing
- Fixed and Suspended Rigging inspection

Manufacturer qualified onsite service and maintenance.

- Warranty guaranteed work
- Moving and fixed light repair
- Off site workshop component level repair
- Equipment replacement fixture hire

Onsite equipment support and venue specific training.

- Onsite client training; on an individual or group basis
- Comprehensive equipment instruction and support
- Out of hours technical help and support
- Manufacturer training days at our premises or venue as required



Our qualifications

Enlightened is an NICEIC approved contractor (National Inspection Council for Electrical Installation Contracting).

Enlightened support staff are fully qualified and have all undertaken full industry Health and Safety training and adhere to all industry safe working practise guidelines.

We regularly work in schools and our team all hold ECS cards (Electrotechnical Certification Scheme) and are DBS Checked to ensure full confidence and accountability.

Our support staff have undertaken and hold valid Rigsafe training certification in the inspection and maintenance of lifting equipment in accordance with LEEA guidelines (Lifting Equipment Engineers Association).



info@enlx.co.uk



01179 727123



www.enlx.co.uk



What we offer

Enlightened offer a range of Support services to cover all your venues maintenance needs and regulatory testing requirements.

- Annual testing, inspection and certification
- Onsite repairs, servicing and trouble shooting
- Tailored, training and equipment instruction
- Design, installation and commissioning of complete technical solutions

Enlightened Hire, Sell and Install equipment to venues across the U.K. Our Sales and Installation team are routinely commissioned to design and install full technical upgrades into a diverse range of performance venues.

We have experience in: Theatre lighting (fixed and moving head) • Lighting rigs (fixed or flying) • Stage truss and lifting gear • Audio (microphones, amplifiers, remote relays) • Video (projection and live cameras) • Speaker systems (incorporated, moveable, line arrayed) • Sound desks and lighting control (live and programmable desks) • Dimmers • Cue lights • House lighting states and Emergency lighting • Staging (modular, static and articulated) • Curtain track and stage effects.

If it gets your attention you can be sure we've given it our full attention and care.



Our values

At Enlightened our team place a high value on our clients trust. Our approach to everything that we do is one of complete honesty and integrity. This allows Enlightened to provide an open and friendly high quality service throughout.

We build longstanding relationships based on these values and as a result Enlightened is flourishing as a company. We believe that doing things right in the present can only lead to a better future.



info@enlx.co.uk



01179 727123



www.enlx.co.uk



Guidance on equipment inspections

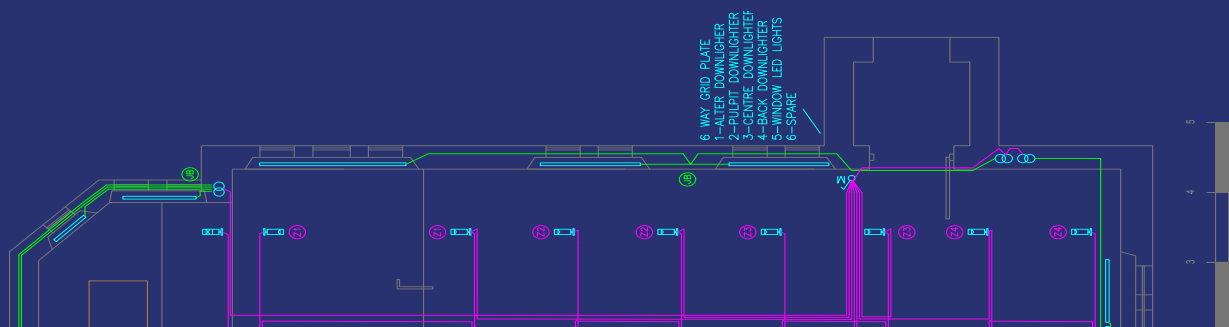
Electrical equipment and permanent theatre fixtures can deteriorate over time either through prolonged use or due to unforeseen adverse environmental conditions.

Invariably theatrical electrical installations and fixtures are modified and their use extended over time to serve additional equipment and requirements. Frequently these additions were not anticipated in the original design and may affect the integrity of the installation and can be potentially dangerous.

It is essential that all electrical installations are inspected, tested and properly maintained in order that they may operate safely and meet the legal obligations incumbent upon duty holders and to ensure the level of confidence they require for their users.

We know how daunting it can be navigating and making sense of the wide slew of legislation involved. Our extensive experience as theatrical installers, designers, practitioners and suppliers makes us ideally qualified to best understand and help.

The following information is intended to provide a clear and uncomplicated overview of the legislation's implication and requirements so that you may choose the Venue Service or Technical Support that best suites your requirements.



Why is it necessary to inspect and test installations?

Inspection and testing is necessary to identify any damage or defects in an installation which may give rise to danger, so as to ensure the safety of persons from the effects of electric shock and burns, and property from the effects of fire and heat, arising from a defective electrical installation. In other words, to ensure that it is SAFE TO USE.

Who is responsible for the testing and inspections?

It is the responsibility of the employer/ building or venue owner/ duty holder/operator, to ensure that electrical systems are safe. Employees have a duty to co-operate with the duty holder in this respect. In some instances this includes those persons charged with the management of the workplace.



info@enlx.co.uk



01179 727123



www.enlx.co.uk



Frequency of testing?

Each venue has an obligation to ensure that all portable and fixed equipment is in a safe and serviceable condition. Venues outlined by IEE (Institution of Electrical Engineers) guidelines in conjunction with BSI (British Standards Institution), recommend that all 'Buildings open to the public', are routinely tested on an annual basis. These include...

- Places of public entertainment
- Church Installations
- Theatres
- Village halls/community centres
- Schools and Colleges

Best practise is for equipment to be inspected and tested on an annual basis. Many insurance companies and entertainment licences stipulate this as a requirement.

The regulation covering inspection is outlined by the Health and Safety Executive office legislation and British Standards Institution guidelines and approved codes of practise.

Health and Safety Executive

- LOLER (Safe use of lifting equipment 1998)
- PUWER (Safe use of work equipment 1998)
- EAW (Electricity at Work)

British Standards Institution

- BS 7671 (Wiring regulations - Guidance note 3 Inspection and Testing)
- BS 7906- 1&2 (Lifting equipment for performance, broadcast and similar applications)
- BS 7594 (Audio-frequency induction-loop systems, AFILS)

Enlightened venue services offer a complete inspection, testing and safety solution for all your venues equipment compliance needs.

What needs to be inspected?

The inspection should comprise a careful scrutiny of the installation to ascertain if there has been any deterioration or damage to the installed equipment, or if there are any installation defects that may give rise to danger.

This includes: Lifting equipment, cables, trunking and conduits, switchgear, distribution boards and protective devices, fixed equipment, lighting fittings and accessories. All need inspecting for deterioration; due to age, the working environment, or the effects of heat generated by overloading or loose connections, and for electrical and mechanical damage. It is also important to validate propriety of any additions, modifications to equipment installation or use since previous inspection.



info@enlx.co.uk



01179 727123



www.enlx.co.uk



Who should carry out equipment inspection and electrical installation testing?

EAW (Electricity at Work), Regulation 16. HSE (Health and Safety Executive), Guidance Note GS27 IEE (Institution of Electrical Engineers), Wiring Regulations:

'Inspection and Testing shall be carried out by electrically competent persons, who shall have sufficient technical knowledge and experience appropriate to the type of installation and an understanding of the test methods and requirements in order to prevent danger or injury.

Since the person must make judgments on the appropriate levels and frequency of testing required, he must have an understanding of the use of the premises concerned, the operating environment and any relevant safety standards or licensing requirements that may be applicable to the premises. The correct instruments must also be used'.

Enlightened is an NICEIC approved contractor. Our support staff are all fully qualified and accredited and hold ECS cards. They are highly experienced in theatrical equipment installation and maintenance.

Our staff have all undertaken RigSafe training in the inspection and maintenance of lifting and rigging equipment in accordance with current LEEA code of practise and LOLER (HSE: Lifting Operations and Lifting Equipment Regulations 1998).



Insurers expectations

Insurance Surveyors and Risk Managers have generally specified that any requirement for electrical inspections must be in accordance with IEE Regulations and often added the rider that the work should be undertaken by an NICEIC approved contractor. Enlightened believe in working to the highest of standards and have been an NICEIC approved contractor for over 15 years. We take seriously our commitment to meeting the highest working standards of practise.



info@enlx.co.uk



01179 727123



www.enlx.co.uk





Enlightened

LIGHTING | AUDIO | STAGING | VIDEO

Enlightened • 26 - 28 Emery Road • Brislington • Bristol • BS4 5PF



info@enlx.co.uk



01179 727123



www.enlx.co.uk