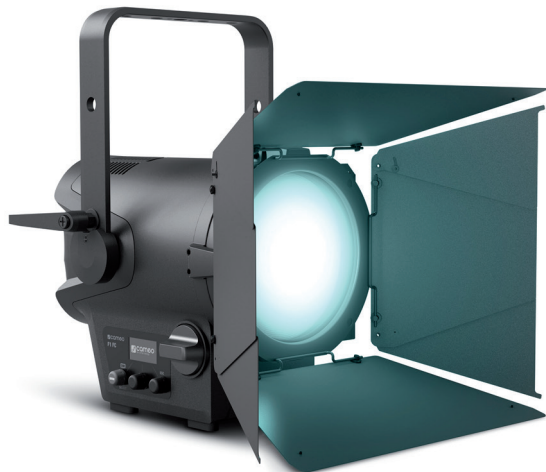


# F1 FC

COMPACT FULL-COLOR FRESNEL SPOTLIGHT  
WITH RGBW-LED



## FEATURES

- ▶ Full-colour Fresnel spotlight with RGBW-LED
- ▶ 2,600 lm luminous flux replaces conventional 650W halogen Fresnel spotlights
- ▶ Powerful, vibrant colour reproduction & continuous setting of the colour temperature 1600 - 6500 K, CRI > 90
- ▶ Adjustable green-magenta correction
- ▶ Continuously variable zoom range (15° to 53°)
- ▶ Flicker-free camera images thanks to selectable pulse-width modulation up to 25 kHz
- ▶ Four selectable dimmer curves with adjustable response
- ▶ Highly efficient cooling system and silent mode for noise-free operation
- ▶ 8-way barn door and gel frame included
- ▶ Compact and lightweight design for mobile applications
- ▶ Optionally expandable with the V-Mount battery plate for battery operation



## DESCRIPTION

As an event technician and theater lighting designer you know: the requirements for a Fresnel spotlight are identical regardless of the size of the application - high quality of light in the most compact dimensions possible, natural colour rendering, professional features such as adjustable PWM and silent mode and more. If the spotlight also has to cover the complete RGB colour spectrum, the requirements catalogue gets thicker and thicker.

In addition to large, powerful spotlights with several kW light output, large theaters need smaller versions that fit seamlessly into the lighting concept. But what about smaller stages, theater festivals away from the big festivals, ensembles on tour in unusual locations?

The F1 FC is an extremely versatile LED Fresnel spotlight with RGBW-LED for the theatre, live, broadcasting and film, which can be transported quickly and easily to any location and can work completely without power cabling if necessary.

Cameo's F series is rounded off by the F1, which is the most compact spotlight in the range. It uses less power compared with the larger models F2 and F4 and, with its 2,600 lm full colour LED, effortlessly replaces conventional spotlights with comparatively inefficient 650 Watt halogen lamps. For professional use, the F1 FC is equal to its big brothers in every respect: RGBW colour mixing in HSI mode for setting colour, intensity and saturation quickly and precisely via three channels, a CCT mode for optimised white light rendition (CRI > 90) including green-magenta correction, a silent mode for practically silent use in noise-sensitive environments and flicker-free operation thanks to selectable pulse width modulation frequency up to 25 kHz.

Paired with the infinitely variable zoom range of 15° to 53°, you're free to use the F1 FC as a theatre or TV & Film light: it works just as well as a high-performance front light or as flexible additional lighting, then wows the very next day when used as a durable spotlight on the street festival stage, and then finally wraps up the week as a natural light source in interviews. Frequently travelling lighting technicians are well aware of the wide range of requirements placed on spotlights and will love the compact, lightweight magnesium housing. In addition, the F1 T can be converted into a battery-operated spotlight for mobile use in just a few steps with the optional V-Mount battery plate.

All requirements covered? With the compact Cameo F1 FC, you can turn any production into a big success.

Features and specifications  
subject to change without notice.

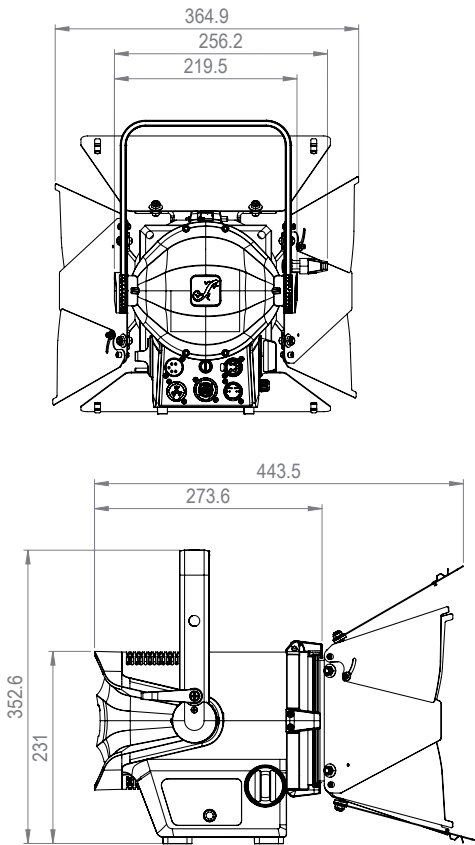
[adamhall.com](http://adamhall.com)

# F1 FC

COMPACT FULL-COLOR FRESNEL SPOTLIGHT WITH RGBW-LED



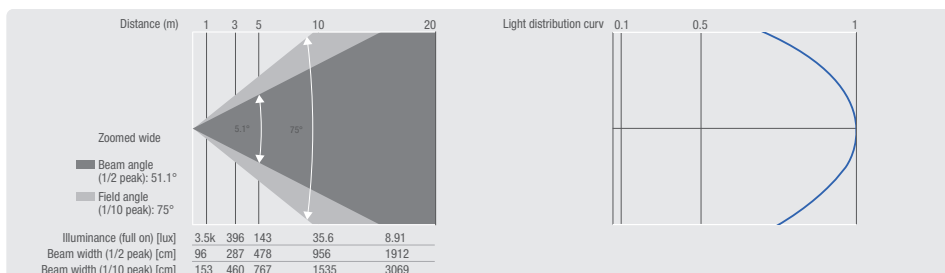
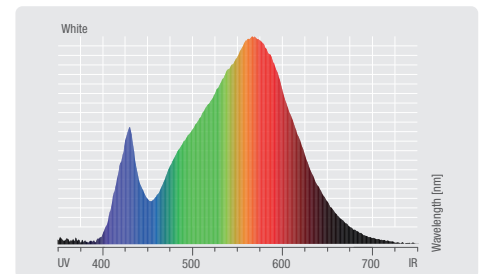
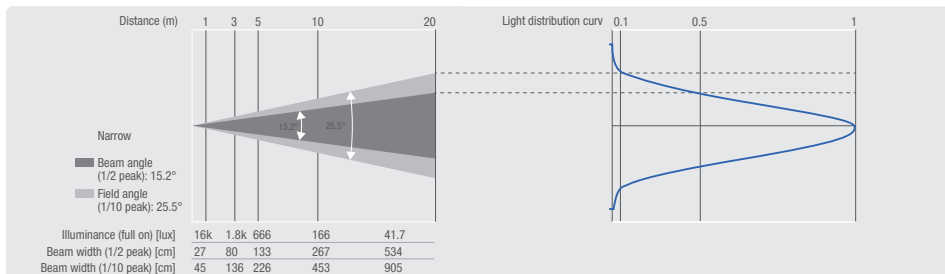
## TECHNICAL DRAWING



## SPECIFICATIONS

Product type	LED Fresnel Spotlight
Type	Theater Fresnel
Colour spectrum	RGBW
Number of LEDs	10 x green, 10 x red, 20 x white, 6 x blue
LED type	124 W (approx. 50000 operating hours), 87 W (approx. 50000 operating hours)
LED PWM Frequency	800 Hz, 1200 Hz, 2000 Hz, 3600 Hz, 12 kHz, 25 kHz - adjustable
Dispersion	Beam Angle: 15 - 51 °, Field Angle: 26 - 75 °
Lens	150 mm Fresnel
DMX input	5-Pol
DMX output	5-Pol
DMX Functions	CCT, colour macro, Device Settings, Dim to Warm, Dimmer, Dimmer Curve, Dimmer Fine, Hue Saturation, RGBW, RGBW Fine, strobe
Standalone modes	Master / Slave mode, Static
Controls	Push encoder
Indicators	OLED Display
Operating voltage	100 V AC - 240 V AC, 50 - 60 Hz
Power consumption	128 W
Power connector	TRUE1 Compatible Power I/O Socket
Power supply connection	4-pin connector
Housing material	Magnesium
Cabinet colour	Black
Protection class IP	IP20
Cooling	Combination of Heat Pipe and Temperature Controlled Fan
Luminous flux	2590 lm
Efficiency	20 lm/W
Colour temperature	1600 - 6500 K, 5600 K
Width	219.5 mm
Height	231 mm
Length	273.6 mm
Weight	4.5 kg
Accessories (included)	8-way barndoor, gel frame, Power cord

## PHOTOMETRICAL DATA



	Luminous flux	Chromaticity coordinates	CCT	R <sub>a</sub>	CRI
Full on	2800 lm	x 0.333 y 0.296	3200 / 5600	90	
Red (calibrated)	651 lm	x 0.695 y 0.300			
Green (calibrated)	1394 lm	x 0.168 y 0.716			
Blue (calibrated)	188 lm	x 0.159 y 0.028			
White (calibrated)	2761 lm	x 0.418 y 0.399			

Features and specifications subject to change without notice.

[adamhall.com](http://adamhall.com)